
TAPIMaster Executable TAPI driver

Foreword	0
Part I Content	2
1 Prepare for installation.....	2
2 Installation.....	2
3 Configuration.....	4

1 Content

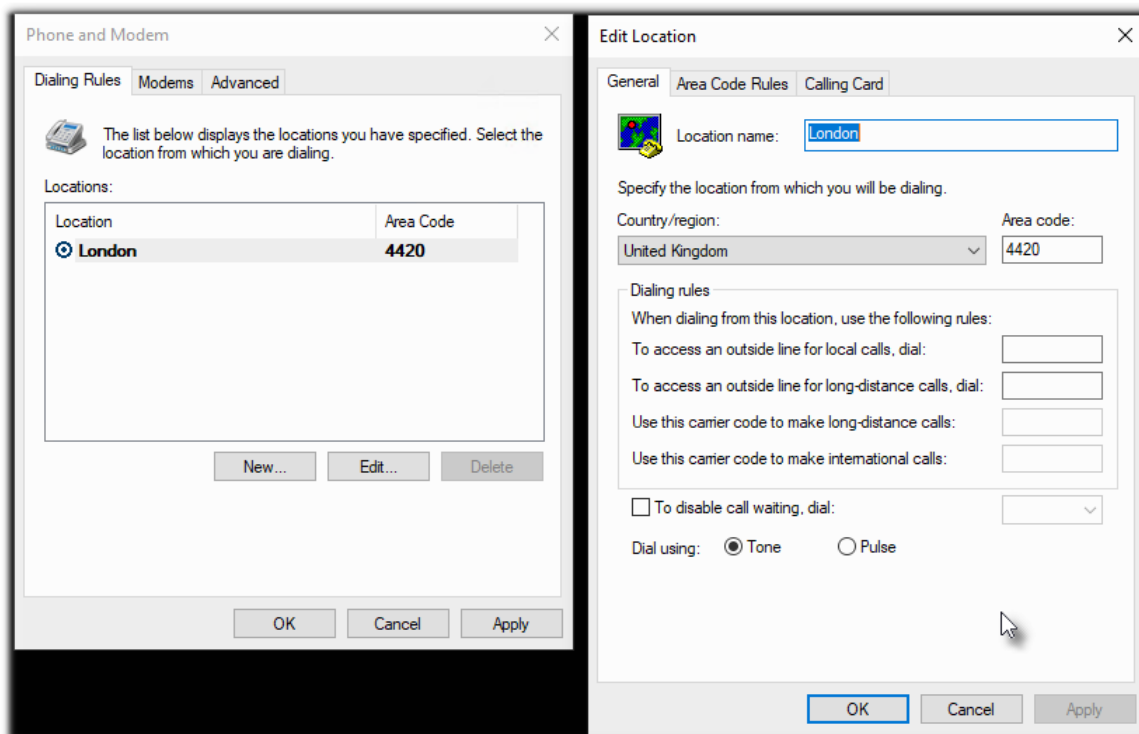
Important informations

- If a TAPI lineMakeCall occurs, this driver will start a program with parameters.
- Alternatively, an http or https address can be called.
- Please use the 32 bit setup for 32 bit Windows and the 64 bit setup for the 64 bit Windows.
- Before installation, make sure that the phone and modem options are configured correctly.
- The unlicensed version allows only a single TAPI line.
- In the unlicensed version, the MakeCall has a time delay of four seconds.
- MakeCall simulates an outgoing connected call. The exact call time is not shown.
- Incoming calls are not shown.

1.1 Prepare for installation

Phone and Modem options

Make sure the country and area code are set correctly.



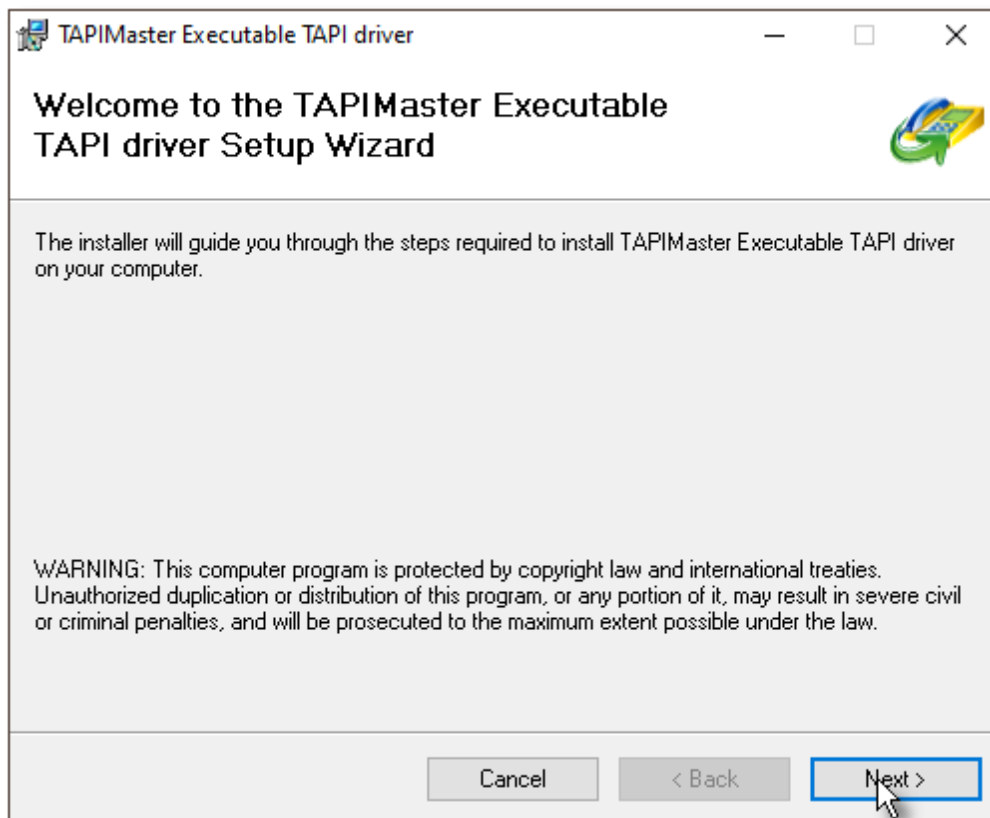
1.2 Installation

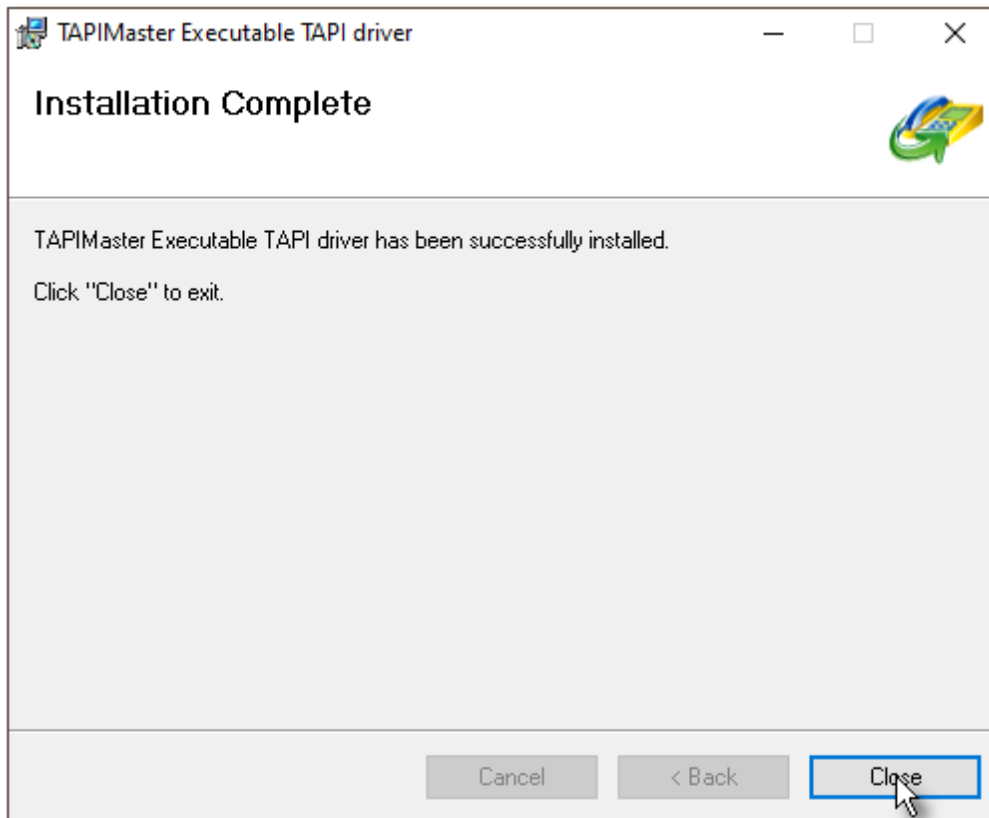
Selection of the TAPI driver

Use the 32 bit setup for 32 bit Windows and the 64 bit setup for 64 bit Windows.

Setup

Please follow the setup dialog instructions.

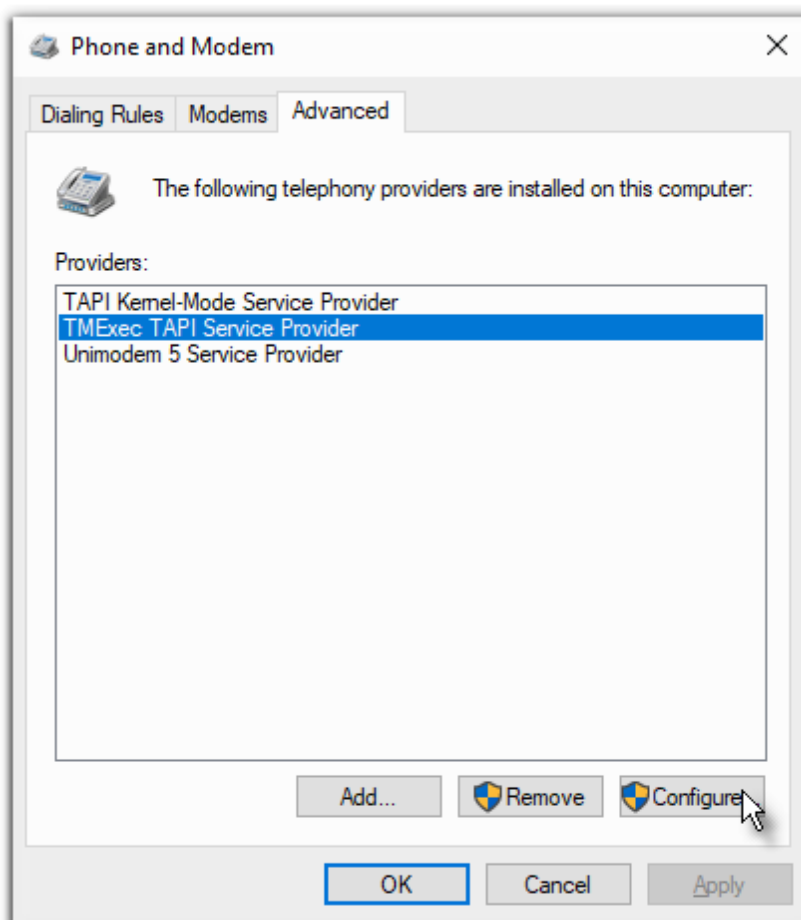




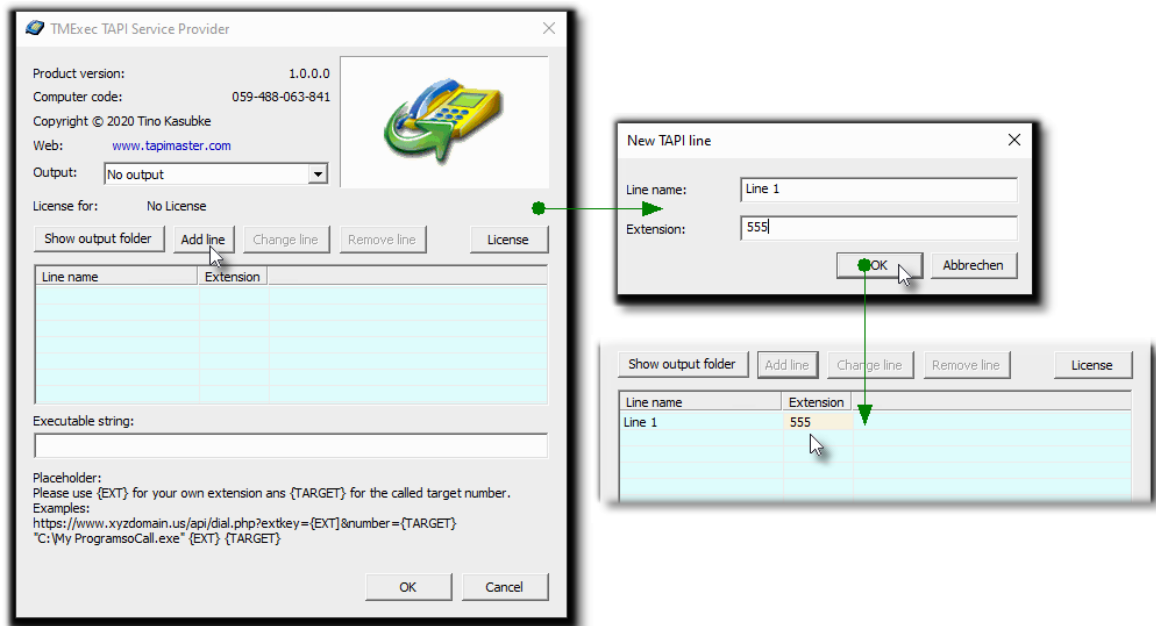
1.3 Configuration

Configuration in the phone and modem options

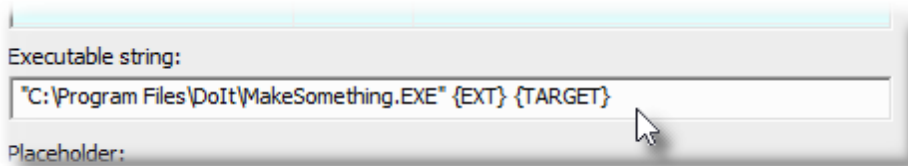
Please open the phone and modem options, page "Advanced".



Select the "TMEExec TAPI Service Provider" and press "Configure". The configuration dialog will be displayed. Please press "Add line". Now you can enter the name and extension of the TAPI line. Only one line can be added in the unlicensed version.



Insert the program to be called and its parameters. The {EXT} token is the placeholder for the extension, the {TARGET} the placeholder for the number to call.



http calls can also be used.

